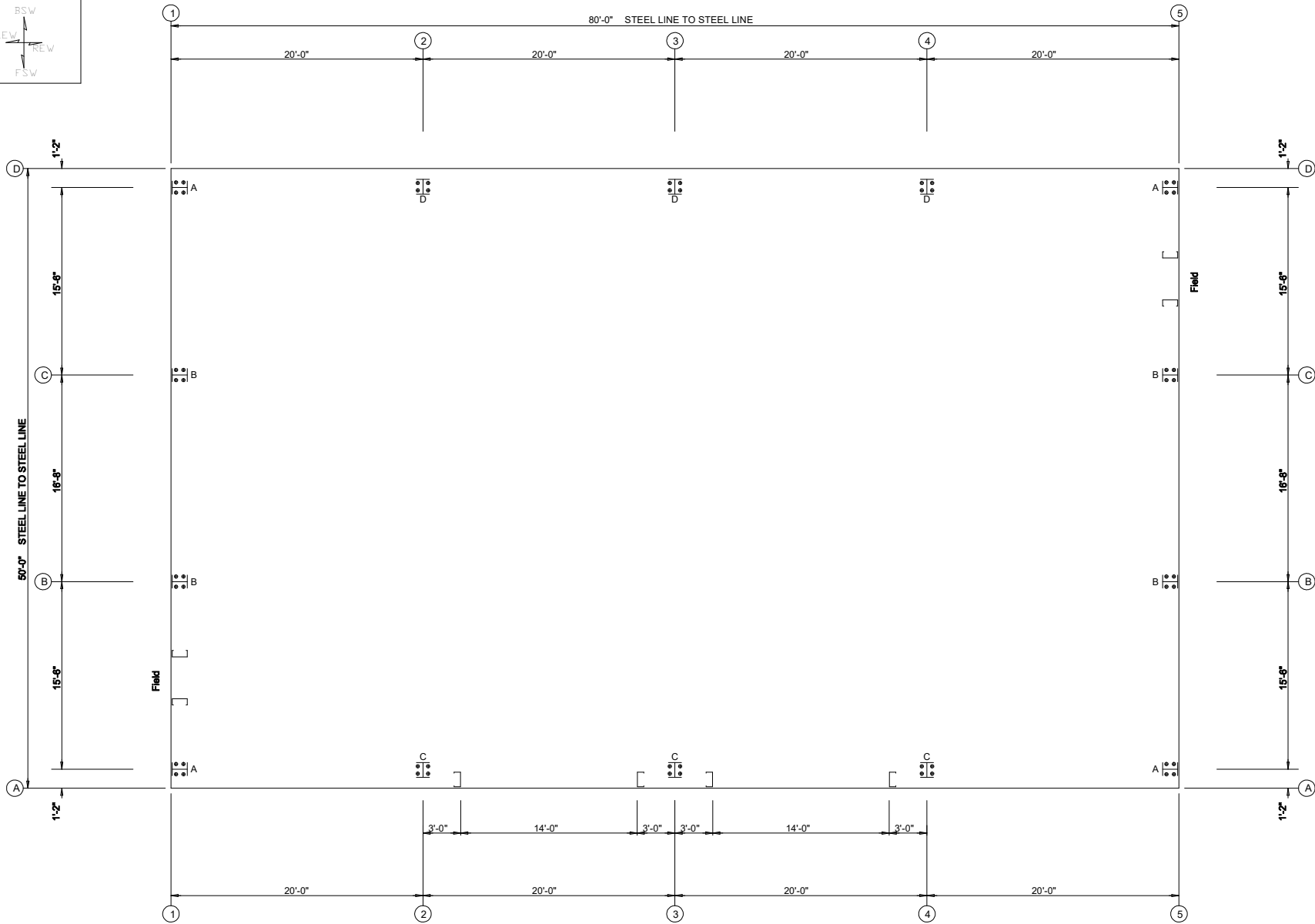


LEGEND



**ANCHOR BOLT PLAN**  
 NOTE: All Base Plates @ 100'-0" (U.N.)  
 Reference Elevation @ 100' 0"

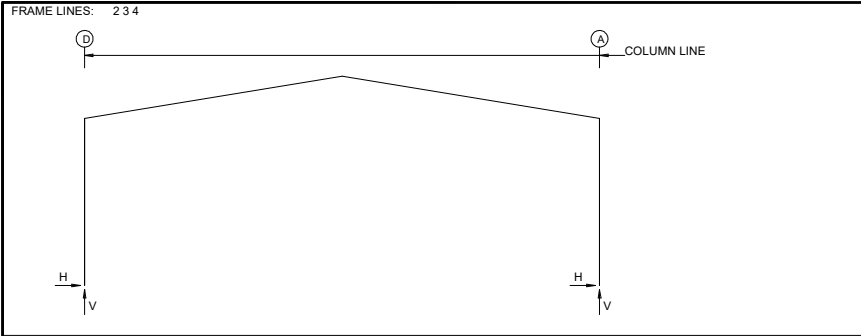
DRAWING IS NOT TO SCALE

**F.O. 50x80x16**

REV.	DESCRIPTION	DATE

**DRAWING STATUS**

FOR PERMIT: THESE DRAWINGS, BEING FOR PERMIT, ARE BY DEFINITION NOT FINAL, AND ARE FOR CONCEPTUAL REPRESENTATION ONLY. THEIR PURPOSE IS TO OBTAIN PROPER INTERPRETATION OF THE CONSTRUCTION. CONSTRUCTION SHALL BE CONSIDERED AS COMPLETE.  
 FOR PERMIT: THESE DRAWINGS, BEING FOR PERMIT, ARE BY DEFINITION NOT FINAL. ONLY DRAWINGS ISSUED FOR CONSTRUCTION CAN BE CONSIDERED AS COMPLETE.  
 FOR CONSTRUCTION: FINAL DRAWINGS.



**RIGID FRAME: BASIC COLUMN REACTIONS (k)**

Frame Line	Column Line	---Dead---		-Collateral-		---Live---		---Snow---		-Wind_Left1-		-Wind_Right1-	
		Horz	Vert	Horz	Vert	Horz	Vert	Horz	Vert	Horz	Vert	Horz	Vert
2*	D	0.9	2.2	0.7	1.5	5.1	10.5	14.1	29.1	-3.4	-6.3	-0.6	-4.5
2*	A	-0.9	2.3	-0.7	1.5	-5.1	10.5	-14.1	29.0	0.6	-4.5	3.4	-6.3

Frame Line	Column Line	--Wind_Left2-		-Wind_Right2-		--Wind_Long1-		--Wind_Long2-		-Seismic_Left		Seismic_Right	
		Horz	Vert	Horz	Vert	Horz	Vert	Horz	Vert	Horz	Vert	Horz	Vert
2*	D	-2.7	-1.3	0.1	0.5	-0.7	-7.2	-1.0	-6.4	-1.4	-0.9	1.4	0.9
2*	A	-0.1	0.5	2.8	-1.3	1.0	-6.4	0.7	-7.2	-1.4	0.9	1.4	-0.9

Frame Line	Column Line	Seismic_Long1		Seismic_Long2		F1UNB_SL_L		F1UNB_SL_R	
		Horz	Vert	Horz	Vert	Horz	Vert	Horz	Vert
2*	D	0.0	-4.9	0.0	4.9	10.6	25.6	10.6	18.0
2*	A	0.0	-4.9	0.0	4.9	-10.6	18.0	-10.6	25.6

2\* Frame lines: 2 3 4

**RIGID FRAME: ANCHOR BOLTS & BASE PLATES**

Frm Line	Col Line	Anc. Bolt Qty	Anc. Bolt Dia	Base Plate (in)		Thick	ARE/BRE (in)
				Width	Length		
2*	D	4	0.750	8.000	16.56	0.500	0.0
2*	A	4	0.750	8.000	15.63	0.500	0.0

2\* Frame lines: 2 3 4

**F.O. 50x80x16**

DRAWING STATUS		REVISION HISTORY	
CITY:	IST/ PK:	REV.	DATE

FOR PERMIT: THESE DRAWINGS, BEING FOR PERMIT, ARE BY DEFINITION NOT FINAL. ONLY DRAWINGS ISSUED FOR CONSTRUCTION CAN BE CONSIDERED AS COMPLETE.

FOR CONSTRUCTION: THESE DRAWINGS, BEING FOR CONSTRUCTION, ARE BY DEFINITION NOT FINAL. ONLY DRAWINGS ISSUED FOR CONSTRUCTION CAN BE CONSIDERED AS COMPLETE.

50'-0" x 80'-0" x 16'-6"  
 DATE: 5/26/26 REVISION: 0  
 ENG: XXX DWN: YY APPD: XXX

**ENDWALL COLUMN: BASIC COLUMN REACTIONS (k)**

Frm Line	Col Line	Dead Vert	Collat Vert	Live Vert	Snow Vert	Wind_Left1 Horiz	Wind_Left1 Vert	Wind_Right1 Horiz	Wind_Right1 Vert	Wind_Left2 Horiz	Wind_Left2 Vert	Wind_Right2 Horiz	Wind_Right2 Vert
1	D	0.4	0.2	1.5	4.1	0.0	-1.2	0.0	-0.9	0.0	-0.3	0.0	-0.1
1	C	0.8	0.6	3.9	10.7	-0.9a	-4.2	0.0	-0.9	-0.9a	-2.5	0.0	0.7
1	B	0.8	0.6	3.9	10.7	0.0	-0.9	0.9a	-4.2	0.0	0.7	0.9a	-2.5
1	A	0.4	0.2	1.5	4.1	0.0	-0.9	0.0	-1.2	0.0	-0.1	0.0	-0.3

Frm Line	Col Line	Wind_Press Horiz	Wind_Suct Vert	Wind_Long1 Horiz	Wind_Long1 Vert	Wind_Long2 Horiz	Wind_Long2 Vert	Seis_Left Horiz	Seis_Left Vert	Seis_Right Horiz	Seis_Right Vert	Seis_Long Horiz	Seis_Long Vert
1	D	-0.7	0.0	0.6	0.0	0.0	-1.4	0.0	-0.9	0.0	0.1	0.0	0.0
1	C	-1.6	0.0	1.1	0.0	0.0	-2.6	-0.3a	-2.1	-1.6a	-1.8	0.0	1.7
1	B	-1.6	0.0	1.1	0.0	0.0	-2.6	0.3a	-2.1	1.6a	-1.8	0.0	1.7
1	A	-2.9	-1.6	0.6	1.6	0.0	-0.9	0.0	-1.4	0.0	0.1	-6.9	-4.9

Frm Line	Col Line	E1UNB_SL_L Horiz	E1UNB_SL_R Vert
1	D	0.0	4.1
1	C	0.0	10.5
1	B	0.0	5.6
1	A	0.0	2.0

Frm Line	Col Line	Dead Vert	Collat Vert	Live Vert	Snow Vert	Wind_Left1 Horiz	Wind_Left1 Vert	Wind_Right1 Horiz	Wind_Right1 Vert	Wind_Left2 Horiz	Wind_Left2 Vert	Wind_Right2 Horiz	Wind_Right2 Vert	Wind Press Horiz
5	A	0.4	0.2	1.5	4.1	0.0	-1.2	0.0	-0.9	0.0	-0.3	0.0	-0.1	-0.7
5	B	0.8	0.6	3.9	10.7	-0.9a	-4.2	0.0	-0.9	-0.9a	-2.5	0.0	0.7	-1.6
5	C	0.8	0.6	3.9	10.7	0.0	-0.9	0.9a	-4.2	0.0	0.7	0.9a	-2.5	-1.6
5	D	0.4	0.2	1.5	4.1	0.0	-0.9	0.0	-1.2	0.0	-0.1	0.0	-0.3	-0.7

Frm Line	Col Line	Wind Suct Horiz	Wind_Long1 Horiz	Wind_Long1 Vert	Wind_Long2 Horiz	Wind_Long2 Vert	Seis_Left Horiz	Seis_Left Vert	Seis_Right Horiz	Seis_Right Vert	Seis_Long Horiz	E2UNB_SL_L Horiz	E2UNB_SL_R Vert
5	A	0.6	0.0	-1.4	0.0	-0.9	0.0	0.1	0.0	0.0	0.0	0.0	4.1
5	B	1.1	0.0	-2.6	-0.3a	-2.1	-1.6a	-1.8	0.0	1.7	0.1	0.0	10.5
5	C	1.1	0.3a	-2.1	0.0	-2.6	0.0	1.7	1.6a	-1.8	0.1	0.0	5.6
5	D	0.6	0.0	-0.9	0.0	-1.4	0.0	0.0	0.0	0.1	0.0	0.0	2.0

Frm Line	Col Line	E2UNB_SL_R Horiz	E2UNB_SL_L Vert
5	A	0.0	2.0
5	B	0.0	5.6
5	C	0.0	10.5
5	D	0.0	4.1

a - Out-of-Plane to column web reaction

**ANCHOR BOLT SUMMARY**

Qty	Locate	Dia (in)	Type
32	Endwall	3/4"	
24	Frame	3/4"	

**BUILDING BRACING REACTIONS**

---Wall Loc	---Col Line	Reactions in plane of wall + Reactions(k)				Panel Shear (lb/ft)
		Wind Horiz	Wind Vert	Seismic Horiz	Seismic Vert	
L_EW	1	C,B	Bracing, see EW reactions			
F_SW	A	1,2	2,2	7.0		
R_EW	5	B,C	Bracing, see EW reactions			
B_SW	D	4,3	2,2	7.0		

\*See RF reactions table for vertical and horizontal reactions in plane of the rigid frame.

Reactions for seismic represent shear force, V  
Reaction values shown are unfactored

**ENDWALL COLUMN: ANCHOR BOLTS & BASE PLATES**

Frm Line	Col Line	Anc. Qty	Bolt Dia	Base Width	Base Length	Base Thick	ARE/BRE (in)
1	D	4	0.750	6.000	7.875	0.375	0.0
1	C	4	0.750	6.000	7.875	0.375	0.0
1	B	4	0.750	6.000	7.875	0.375	0.0
1	A	4	0.750	6.000	7.875	0.375	0.0
5	A	4	0.750	6.000	7.875	0.375	0.0
5	B	4	0.750	6.000	7.875	0.375	0.0
5	C	4	0.750	6.000	7.875	0.375	0.0
5	D	4	0.750	6.000	7.875	0.375	0.0

Reaction Type	Description
Collateral	Collateral Load
Snow	Uniform Roof Snow Load
Wind_Right1	Transverse Wind From Right With Internal Pressure
Wind_Right2	Transverse Wind From Right With Internal Suction
Wind_Long2	Longitudinal Wind From Right Endwall
Wind_Suct	Wind Suction Applied Away From Endwall
Seismic_Right	Seismic Load Applied From Right
F# Unb_SL_L	Unbalanced Snow Load On Left
F# PAT_SL#	Pattern Snow Load
Sliding	Sliding Snow Load

**+DESIGN INFORMATION**

- All loading conditions are examined and only the maximum / minimum H or V and the corresponding H or V are reported.
- Positive reactions are shown in the sketch. Foundation loads are in opposite directions.
- Bracing reactions are in the plane of the brace with the H pointing away from the braced bay. The vertical reaction is downward.
- Building reactions are based on the following building data:

DESIGN CRITERIA	SEISMIC CRITERIA	DEFLECTION LIMITS
Width (ft) = 50	Seismic Importance = 1.00	ENDWALL COLUMN L / 180
Length (ft) = 80	Risk Category = II - Normal	ENDWALL RAFTER (Live) L / 180
Eave Height (ft) = 16.5	Mapped Spectral Response Accelerations	ENDWALL RAFTER (Wind) L / 180
Roof Slope (rise/12) = 2.0:12	Sa (0.2,X) = 0.2510	WALL GIRTS L / 90
Building Code = NBC 20	Sa (0.5,X) = 0.2300	PURLIN (LIVE) L / 180
Local Code (State/Prov) = NBC 20	Sa (1.0,X) = 0.1320	PURLIN (WIND) L / 180
Dead Load (psf) = 2.37	Sa (2.0,X) = 0.0605	WALL PANEL L / 90
Collateral Load (psf) = 3.00	Sa (5.0,X) = 0.0152	ROOF PANEL (Live) L / 180
Roof Live Load (psf) = 21.00	Sa (10.0,X) = 0.0047	ROOF PANEL (Wind) L / 120
Frame Live Load (psf) = 21.00	Site Class = D	RIGID FRAME (Horiz) H / 60
Snow: Ground Snow Load (psf) = 64.79	Expanded Formula = S(Ta)Mv*le*W/(Rd*Ro)	RIGID FRAME (Vert) H / 180
Snow Importance = 1.0000	Longitudinal Base Shear (K) = 13.91	WIND BRACING H / 60
Associated Rain Load (psf) = 0.27	Transverse Base Shear (K) = 11.66	RIGID FRAME (Crane) H / 100
Wind Exposure Factor = 1.00	--Seismic Response Coefficients--	RIGID FRAME (Seismic) H / 40
Slippery Roof = N	Frame = 0.118	SEISMIC BRACING H / 40
Roof Snow Load (psf) = 58.10	FSW = 0.118	PARTITION COLUMN L / 120
Wind: Wind (1/50) (psf) = 7.32	BSW = 0.118	PARTITION GIRT L / 120
Risk Category = II - Normal	--Response Modification Factors--	PARTITION PANEL L / 120
Importance - Wind = 1.00	Frame = 1.5	
Wind Exposure = O	FSW = 1.5	
Enclosure Classification = 2	BSW = 1.5	
--Internal Pressure Coefficients--		
Pressure = 0.30		
Suction = -0.45		
---Components & Cladding---		
Design Pressure: Pressure (psf) = 17.84		
Suction (psf) = -17.84		
Equivalent Static Force Procedure.		

50'-0" x 80'-0" x 16'-6"	REVISION: 0
DATE: 5/26/26	DWN: YY
ENG: XXX	APPD: XXX

**F.O. 50x80x16**

CITY:	ST/PC:	DATE

**REVISION HISTORY**

REV.	DESCRIPTION

**DRAWING STATUS**

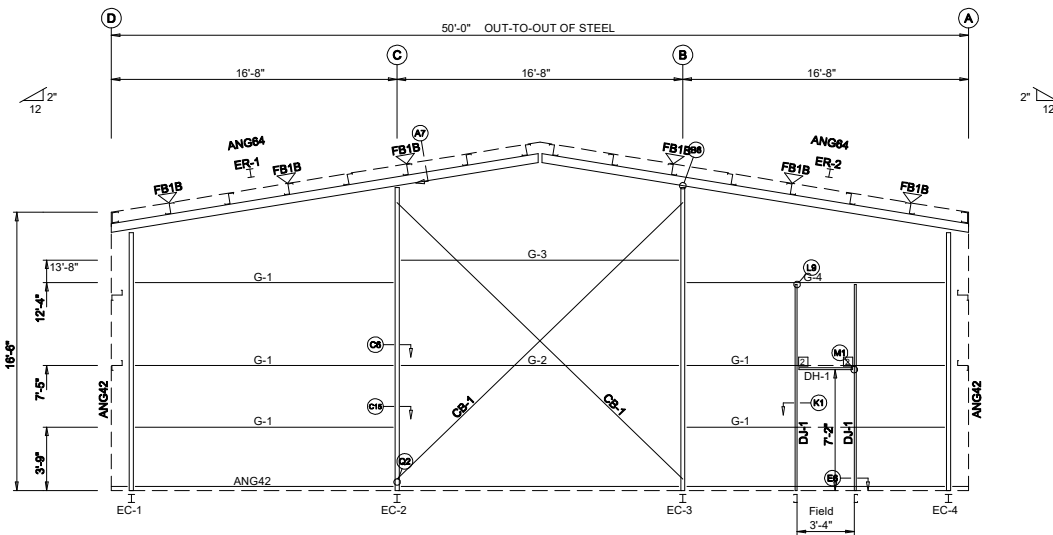
FOR PERMIT: THESE DRAWINGS BEING FOR PERMIT ARE BY DEFINITION NOT FINAL AND ARE FOR CONCEPTUAL REPRESENTATION ONLY. THE PURPOSE IS TO OBTAIN PROPER INTERPRETATION OF THE CONSTRUCTION. FOR CONSTRUCTION CAN BE CONSIDERED AS COMPLETE.

FOR PERMIT: THESE DRAWINGS BEING FOR PERMIT ARE BY DEFINITION NOT FINAL ONLY DRAWINGS ISSUED FOR CONSTRUCTION CAN BE CONSIDERED AS COMPLETE.

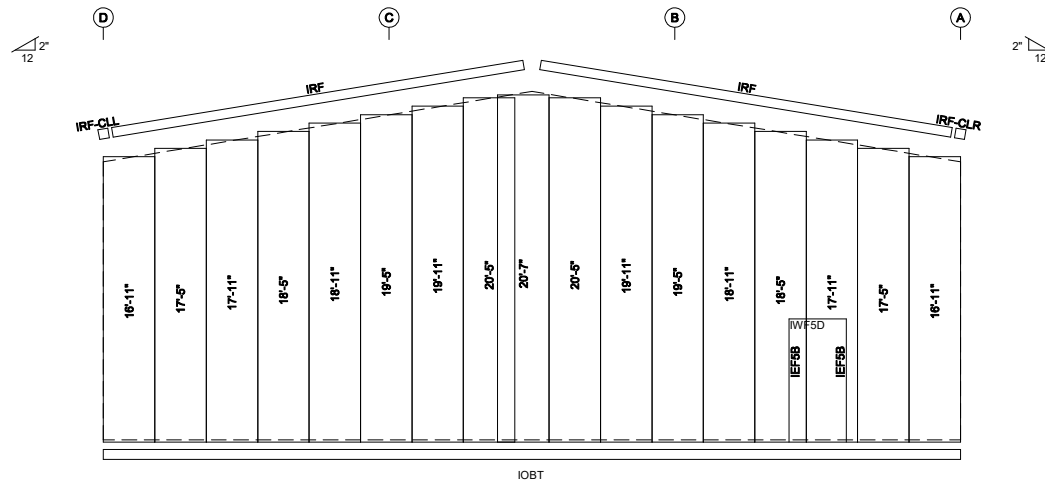
FOR CONSTRUCTION: FINAL DRAWINGS.

GENERAL	MATERIALS	ASTM DESIGNATION	MINIMUM YIELD	MATERIALS	ASTM DESIGNATION	MINIMUM YIELD
All materials included in the Metal Building System are in accordance with the manufacturer's standard materials and details unless otherwise specified on the order documents. (MBMA Common Industry Practices 2021, Section 2.1)	Hot-Rolled Mill Sections	A 36, A 572, A 992	Fy = 36 ksi and/or 50 ksi	Roof and Wall Sheeting	A 792, Gr. 50 Class 1 A 792, Gr. 80	Fy = 50 ksi Fy = 80 ksi
<b>DESIGN RESPONSIBILITY</b> The manufacturer is responsible only for the structural design of the Metal Building System it sells to the purchaser / customer. Neither the manufacturer nor the manufacturer's engineer is the design professional or engineer of record for the construction project. The manufacturer is not responsible for the design of any component or materials not sold by it, or their interface and connection with Metal Building System unless such design responsibility is specifically required by the order documents. (MBMA Common Industry Practices 2021, Section 3.1) CSA A660 Manufacturer's Information: Corle Building Systems – COREO	Structural Steel Plates	A 572, A 1011	Fy = 55 ksi	Mid Steel Bolts	A 307	Fy = 36 ksi
	Structural Steel Bars	A 572 or A 529	Fy = 55 ksi	High Strength Bolts	F3125; A 325-N A 490-N	Fy = 92 or 81 ksi N/A
	Cold Formed Light Gauge Shapes	A 653 Gr. 55	Fy = 55 ksi	Anchor Rods (If supplied)	A 36	Fy = 36 ksi
<b>FOUNDATION DESIGN AND ANCHOR BOLTS</b> The manufacturer is not responsible for the design, materials, and workmanship of the foundation. The anchor bolt plans prepared by the manufacturer are intended to show only the anchor bolt location, diameter (based on ASTM A36 bolts), and quantity required to connect the Metal Building System to the foundation. (MBMA Common Industry Practices 2021, Section 3.2.2) It is the responsibility of the end customer to ensure that adequate provisions are made for specifying bolt embedment, bearing angles, tie rods, and / or associated items embedded in the concrete foundation, as well as foundation design based on the loads imposed by the Metal Building System, or other imposed loads, and the bearing capacity of the soil and other conditions of the building site. (MBMA Common Industry Practices 2021, Section 3.2.2) U.S. – Anchor bolts shall be accurately set to a tolerance of +/- 1/8 in both elevation and location (AISC Code of Standard Practice for Steel Buildings and Bridges) Canada – Anchor bolts shall be accurately set in accordance with CISC Code of Standard Practice, December 2015, Clause 7.8.1	Cable Bracing	A 475, EHS	N/A	Pipe and Hollow Structural Sections	A 500 Gr. B	Fy = 42 ksi, 46 ksi
	Rod Bracing	A 36	Fy = 36 ksi			
<b>CORRECTION OF ERRORS AND REPAIRS</b> The correction of minor misfits by the use of drift pins to draw the components into line, shimming, moderate amounts of reaming, chipping, and cutting, and the replacement of minor shortages of material are a normal part of erection and are not subject to claim. (AISC Code of Standard Practice for Steel Buildings and Bridges, June 15, 2016, Section 7.14; CISC Code of Standard Practice, December 2015, Clause 7.15; MBMA Common Industry Practices 2021, Section 6.10).						
<b>ADJACENT EXISTING BUILDINGS</b> The manufacturer does not investigate the influence of the Metal Building System on adjacent existing buildings or structures. The end customer assures that such buildings and structures are adequate to resist snow loads and other conditions as a result of the presence of the Metal Building System. (MBMA Common Industry Practices 2021, Section 3.2.5)	<b>DRAWING DISCREPANCIES</b> In case of discrepancies between the manufacturers steel plans and plans for other trades, the manufacturers steel plans govern. (AISC Code of Standard Practice for Steel Buildings and Bridges, June 15, 2016, Section 3.3; CISC Code of Standard Practice, December 2015, Clause 3.4; MBMA Common Industry Practices 2021, Section 3.1).					
<b>SHOP-PRIMED STEEL</b> All structural members of the Metal Building System not fabricated of corrosion resistant material or protected by corrosion resistant coating are painted with one coat of shop primer. All surfaces to receive shop primer are cleaned of loose rust, loose mill scale and other foreign matter by using, as a minimum the hand tool cleaning method SSPC-SP2 (Steel Manual, Structures Painting Council) prior to painting. The coat of shop primer is intended to protect the steel framing for only a short period of exposure to ordinary atmospheric conditions. Shop-primed steel should be placed on blocking to prevent contact with the ground, and so positioned as to minimize water holding pockets, dust, mud or other contamination of the primer film. Repairs of damage to primed surfaces and removal of foreign material due to improper field storage or site conditions are not the responsibility of the manufacturer. (CISC Code of Standard Practice, December 2015, Clauses 6.8 & 6.9; (MBMA Common Industry Practices 2021, Section 4.2.4).	<b>DELIVERIES</b> Delivery of any material by the manufacturers carrier, a common carrier, or to purchasers/ customers own leased, chartered, or authorized conveyance shall constitute delivery to builder, and thereafter, such material shall be at builders risk. If builder chooses to use its own, or private carrier, it shall be solely responsible for compliance with all applicable government regulations. All charges shall be borne by the builder. The manufacturers responsibility for damage or loss ceases upon delivery of shipment to carrier. The manufacturer will endeavor to deliver on the required date. The manufacturers truck is not considered as being late if deliveries are between 8am – 12pm (morning) and 12pm – 5pm (afternoon). However, the manufacturer cannot be held responsible for circumstances beyond our control. For deliveries via the manufacturers truck, the manufacturer will only honor claims that were approved by the customer service department at the time of delivery. For deliveries via contract carriers, it is the responsibility of the customer to file claims with the carrier. The manufacturer cannot assume any liability for the claim.					
<b>ERECTION-GENERAL</b> The erector, by entering into contract to erect the building, holds itself out as skilled in the erection of Metal Building Systems and is responsible for complying with all applicable local, federal, and state construction and safety regulations including OSHA regulations as well as any applicable requirements of local, national, or international union rules or practices. (CISC Code of Standard Practice, December 2015, Clause 7.3; (MBMA Common Industry Practices 2021, Section 6.9).	<b>SHORTAGES</b> The purchaser /customer should make an inspection upon arrival of all building components. The purchaser/customer must note on the freight bill any missing item(s) and notify the manufacturers customer service department immediately; otherwise, the manufacturer cannot be held responsible for any shortages. If any item is damaged, note on the bill of lading and file a claim with the freight agent. Concealed shortages must be reported to the manufacturers customer service department within the following time frames (date from receipt of first delivery), based on the project shipment size, i.e., number of truck loads used in delivery. <b>1 to 3 loads...2 weeks 4 loads and over...3 weeks</b> The manufacturers responsibility for shortages expires at the end of these time periods.					
<b>ERECTION-TOLERANCES</b> U.S. : Erection tolerances are those set forth in AISC code of standard practice except individual members are considered, plumb, level and aligned if the deviation does not exceed 1:500. (AISC Code of Standard Practice for Steel Buildings and Bridges June 15, 2016 Section 7.13.1; MBMA Common Industry Practices 2021, Section 6.8) Canada: Erection tolerances are those set forth in CISC Code of Standard Practice except individual members are considered plumb, level and aligned if the deviation does not exceed 1:500. (CISC Handbook of Steel Construction, Eleventh Edition, Third Revised Printing, Part 1, Clause 29.3; MBMA Common Industry Practices 2021, Section 6.8)	<b>FABRICATION ERRORS</b> The purchaser/customer is responsible for contacting the customer service department to advise the manufacturer of fabrication problems and corresponding cost estimates. The manufacturer will be responsible for providing the builder with verbal approval to proceed with appropriate field corrections. This will be done in a timely manner. IF THE BUILDER PROCEEDS WITH CORRECTIVE WORK WITHOUT THE MANUFACTURERS APPROVAL, HE DOES SO AT HIS OWN RISK. The manufacturer shall not be responsible for any claims where the purchaser/customer has not documented the problem, its correction, and reasonable costs for repair, and submitted this documentation for payment within 30 days of the occurrence. <b>INVOICE PAYMENT</b> By acceptance of the materials of services set forth in the invoice, the purchaser/customer agrees to pay the invoice amount within the time period specified on the invoice. AT NO TIME IS IT ACCEPTABLE TO DEDUCT A BACK CHARGE OR SHORTAGE FROM AN INVOICE.					
<b>BOLT TIGHTENING</b> The proper tightening and inspection of all fasteners is the responsibility of the erector (Reference RCSC for structural joints using high strength bolts; June 11, 2020). All high strength (ASTM F3125, A325, A490) bolts and nuts must be tightened by the "turn-of-the-nut" method unless otherwise specified by the end customer in the contract documents. Inspection of high strength bolt and nut installation by other than the erector must also be specified in the contract documents and the erector is responsible for ensuring that the installation procedures are compatible prior to the start of erection (CISC Handbook of Steel Construction, Eleventh Edition, Third Revised Printing, Part 1, Clause 23.7.2). (MBMA Common Industry Practices 2021, Section 6.9).	<b>SAFETY PROCEDURES</b> The manufacturer is committed to manufacturing a quality product that can be erected safely. Although good job site practices and a commitment to safety by the erector are beyond the control of the manufacturer, the manufacturer highly recommends the erector provide good, safe working conditions on the job site. The erector should follow all local, state, and federal health and safety regulations at all times. Accident prevention practices should be implemented and each employee should know emergency procedures. The manufacturer also recommends daily meetings to discuss erection safety procedures. For additional information concerning federal health and safety regulations, contact the occupational safety and health administration (osha). <b>U.S. Department of Labor Occupational Safety and Health Administration 200 Constitution Avenue, N.W. Washington, DC 20210 www.osha.gov</b> The manufacturer shall not be responsible for personal injury or property damage as a result of failure to follow all applicable safety regulations and material handling and installation recommendations.					

50'-0" x 80'-0" x 16'-6" DATE: 5/26/2024 ENG: XXX DWG: YYY APPD: XXX	F.O. 50x80x16	CITY: _____ ST: / PV: _____	<input type="checkbox"/> FOR APPROVAL, THESE DRAWINGS, BEING FOR APPROVAL, ARE BY DEFINITION NOT TO BE USED FOR CONSTRUCTION UNLESS THEY ARE FIRST APPROVED BY THE PROJECT ARCHITECT. THE PROJECT ARCHITECT'S ONLY DRAWINGS ISSUED FOR CONSTRUCTION SHALL BE CONSIDERED AS COMPLETE. <input type="checkbox"/> THESE DRAWINGS, BEING FOR PERMIT, ARE BY DEFINITION NOT FINAL. ONLY DRAWINGS ISSUED FOR CONSTRUCTION CAN BE CONSIDERED AS COMPLETE. <input type="checkbox"/> FOR CONSTRUCTION FINAL DRAWING.	<b>REVISION HISTORY</b> <table border="1"> <thead> <tr> <th>NO.</th> <th>DESCRIPTION</th> <th>DATE</th> </tr> </thead> <tbody> <tr> <td> </td> <td> </td> <td> </td> </tr> <tr> <td> </td> <td> </td> <td> </td> </tr> <tr> <td> </td> <td> </td> <td> </td> </tr> <tr> <td> </td> <td> </td> <td> </td> </tr> </tbody> </table>	NO.	DESCRIPTION	DATE												
NO.	DESCRIPTION	DATE																	
PAGE @PAGE @PAGE TOTAL																			



ENDWALL FRAMING: FRAME LINE 1



ENDWALL SHEETING & TRIM: FRAME LINE 1

PANELS: 26 Ga. R - TBD

BOLT TABLE FRAME LINE 1				
LOCATION	QUAN	TYPE	DIA	LENGTH
ER-1/ER-2	8	A325	1/2"	1 1/2"
Columns/Raf	2	A325	3/4"	1 3/4"

CONNECTION PLATES FRAME LINE 1			
ID	QUAN	MARK/PART	
2	2	c1	

FLANGE BRACE TABLE FRAME LINE 1		
VID	MARK	LENGTH
1	FB1B	1'-2 1/4"

F.O. 50x80x16

DRAWING STATUS		REV.	DESCRIPTION	DATE
CITY:	IST/PC:			

FOR PERMIT: THESE DRAWINGS, BEING FOR PERMIT, ARE BY DEFINITION NOT FINAL, AND ARE FOR CONCEPTUAL REPRESENTATION ONLY. THEIR PURPOSE IS TO CONFIRM PROPER INTERPRETATION OF THE INFORMATION PROVIDED HEREON. THE INFORMATION PROVIDED FOR CONSTRUCTION CAN BE CONSIDERED AS COMPLETE.

FOR CONSTRUCTION: THESE DRAWINGS, BEING FOR CONSTRUCTION, ARE BY DEFINITION NOT FINAL, ONLY DRAWINGS ISSUED FOR CONSTRUCTION CAN BE CONSIDERED AS COMPLETE.

FOR CONSTRUCTION: FINAL DRAWINGS.

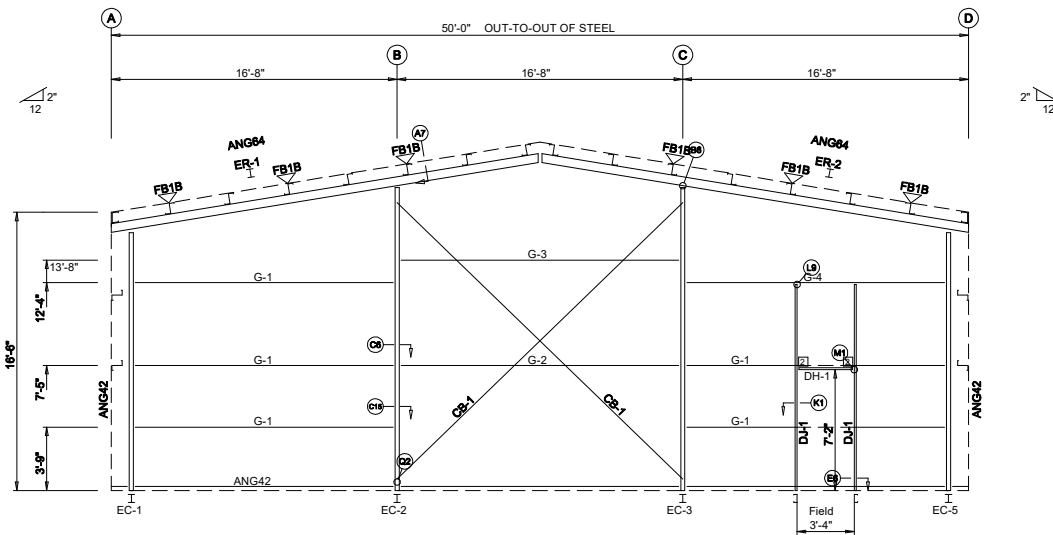
GENERAL NOTES:

1. Use TEK5WW screws in place of SD150 panel screws at all 10 gage members.
2. See detail C7A for field coping of coldform endwall column flange braces.
3. All connections to door or window jambs where the clip is not designated in the clip table / drawing are made with JC# clips (#= Girt Depth).

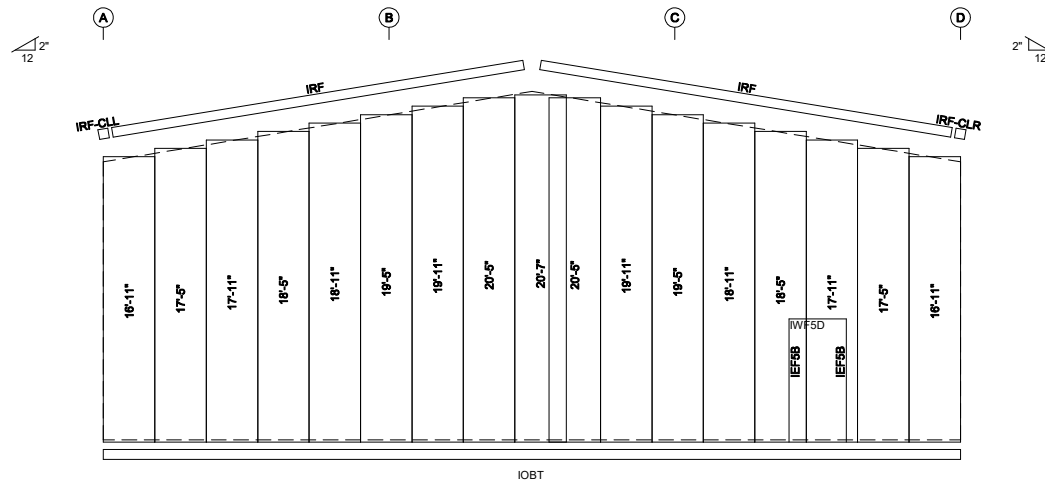
DRAWING IS NOT TO SCALE

TRIM COLORS	
EAVE TRIM = TBD	CORNER TRIM = TBD
BASE TRIM = TBD	GUTTER =
DOOR TRIM = TBD	DOWNSPOUTS =
RAKE TRIM = TBD	
* LINER TRIM = Liner panel color	
* SOFFIT TRIM = Soffit panel color	
* ONLY APPLICABLE IF LINER TRIM OR SOFFIT PANEL IS INDICATED ON BUILDING ORDER.	

50'-0" x 80'-0" x 16'-6"  
DATE: 5/26/26 REVISION: 0  
ENG: XXX DWN: YY APPD: XXX



ENDWALL FRAMING: FRAME LINE 5



ENDWALL SHEETING & TRIM: FRAME LINE 5

PANELS: 26 Ga. R - TBD

**GENERAL NOTES:**

1. Use TEK5WW screws in place of SD150 panel screws at all 10 gage members.
2. See detail C7A for field coping of coldform endwall column flange braces.
3. All connections to door or window jambs where the clip is not designated in the clip table / drawing are made with JC# clips (#= Girt Depth).

DRAWING IS NOT TO SCALE

**BOLT TABLE**  
FRAME LINE 5

LOCATION	QUAN	TYPE	DIA	LENGTH
ER-1/ER-2	8	A325	1/2"	1 1/2"
Columns/Raf	2	A325	3/4"	1 3/4"

**CONNECTION PLATES**  
FRAME LINE 5

ID	QUAN	MARK/PART
2	2	c1

**FLANGE BRACE TABLE**  
FRAME LINE 5

VID	MARK	LENGTH
1	FB1B	1'-2 1/4"

TRIM COLORS	
EAVE TRIM = TBD	CORNER TRIM = TBD
BASE TRIM = TBD	GUTTER =
DOOR TRIM = TBD	DOWNSPOUTS =
RAKE TRIM = TBD	
* LINER TRIM = Liner panel color	
* SOFFIT TRIM = Soffit panel color	
* ONLY APPLICABLE IF LINER TRIM OR SOFFIT PANEL IS INDICATED ON BUILDING ORDER.	

**F.O. 50x80x16**

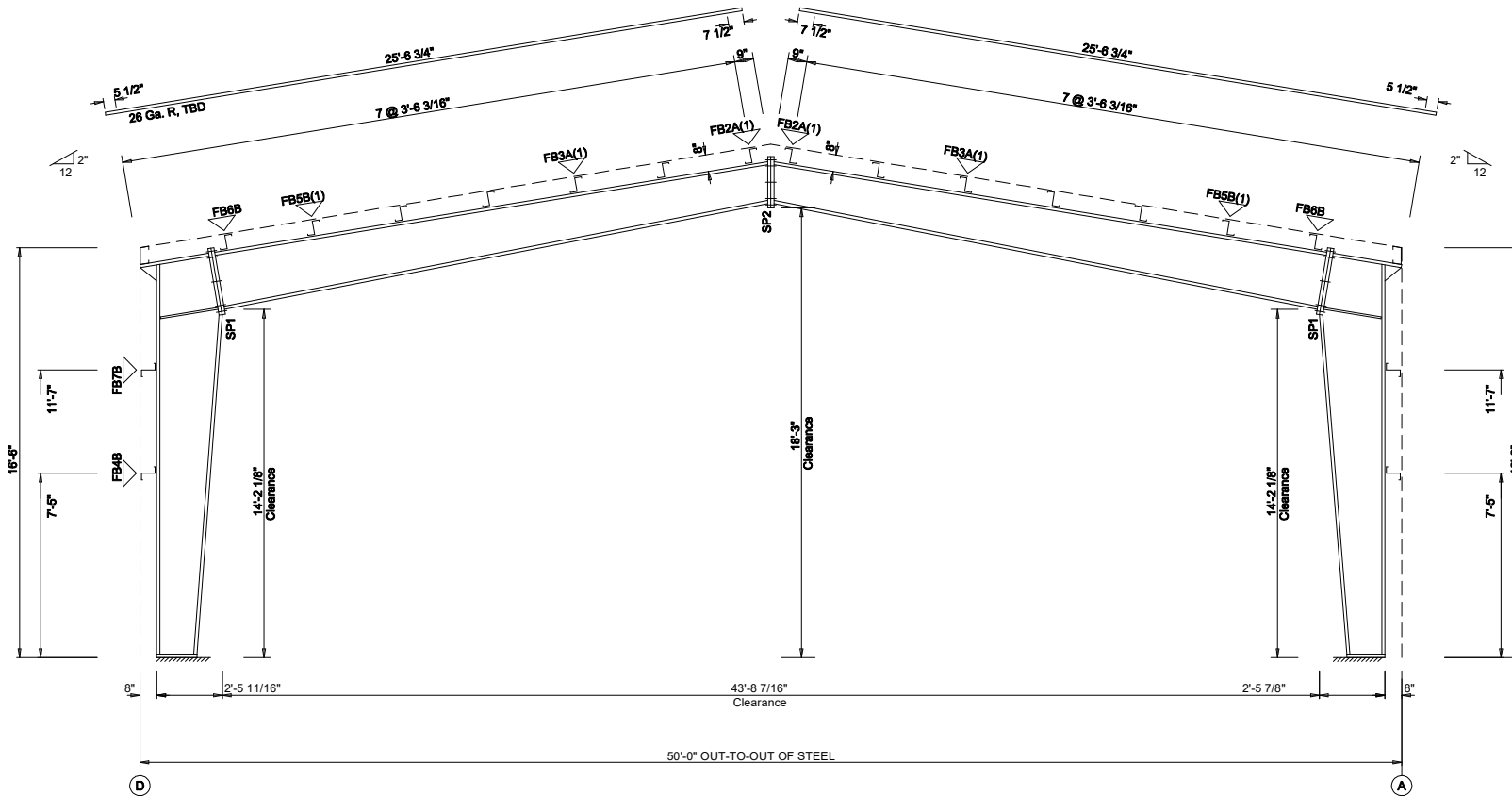
CITY:	ST/PC:	DATE

DRAWING STATUS	
<input type="checkbox"/>	FOR PERMIT: THESE DRAWINGS, BEING FOR PERMIT, ARE BY DEFINITION NOT FINAL. ONLY DRAWINGS ISSUED FOR CONSTRUCTION CAN BE CONSIDERED AS COMPLETE.
<input type="checkbox"/>	FOR CONSTRUCTION: THESE DRAWINGS, BEING FOR CONSTRUCTION, ARE BY DEFINITION NOT FINAL. ONLY DRAWINGS ISSUED FOR CONSTRUCTION CAN BE CONSIDERED AS COMPLETE.
<input type="checkbox"/>	FINAL DRAWINGS: THESE DRAWINGS, BEING FINAL, ARE BY DEFINITION NOT FINAL. ONLY DRAWINGS ISSUED FOR CONSTRUCTION CAN BE CONSIDERED AS COMPLETE.

50'-0" x 80'-0" x 16'-6"  
DATE: 5/26/26 REVISION: 0  
ENG: XXX DWN: YY APPD: XXX

SPLICE BOLT TABLE						
Mark	Qty		Int	Type	Dia	Length
	Top	Bot				
SP1	4	4	2	A325	1.000	2.75
SP2	4	4	2	A325	0.750	2.00

▽ FLANGE BRACES: Both Sides(U.N.)  
 FBxxB(1)  
 B - L20X1/4  
 A - L15X1/8



BUILDING CROSS SECTION: FRAME LINE 2 3 4

GENERAL NOTES:

1. See Detail Sheets for Connection Information.
2. See Shipping List for Flange Brace Lengths.

DRAWING IS NOT TO SCALE

F.O. 50x80x16

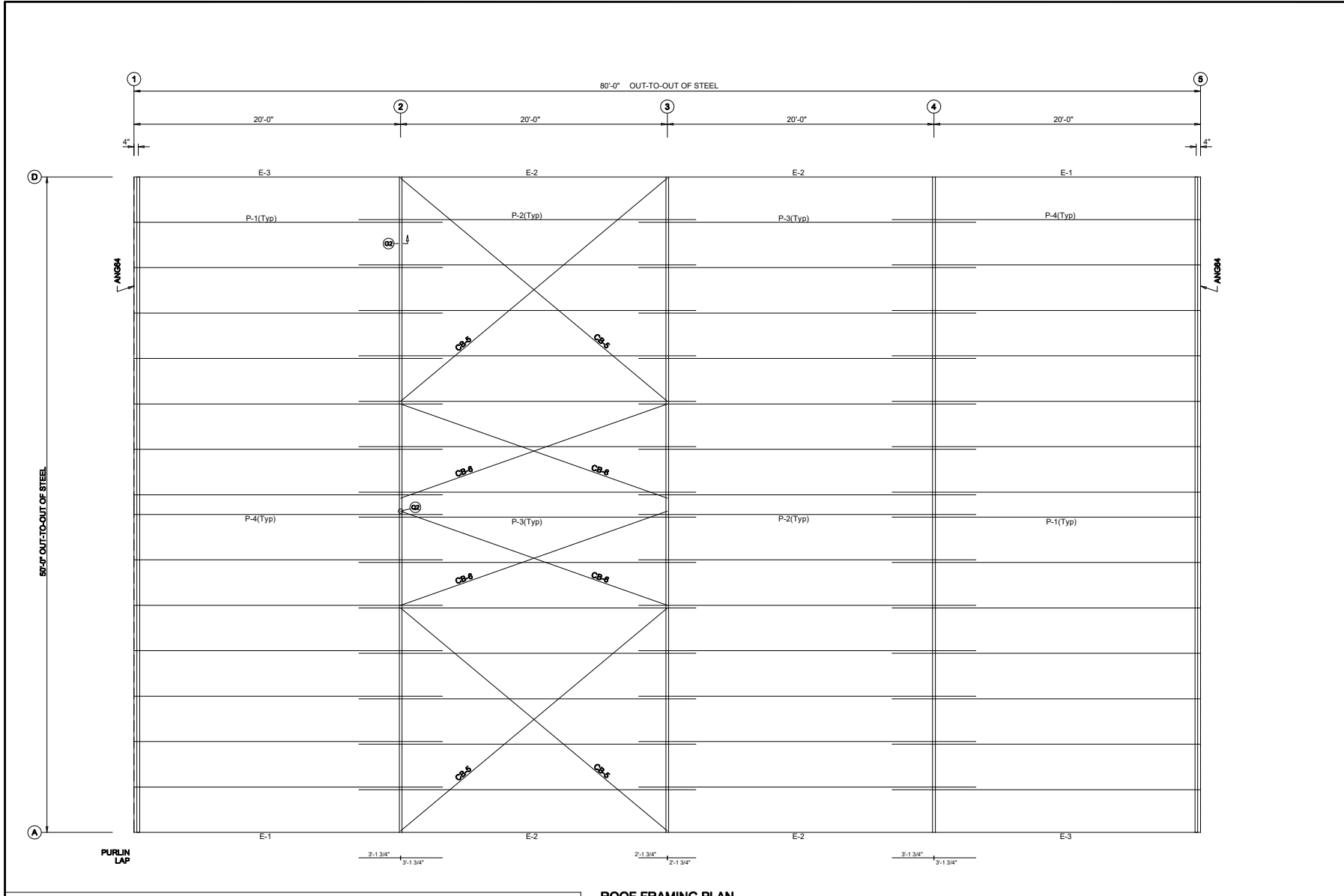
REVISION HISTORY	
REV.	DATE

**DRAWING STATUS**

FOR APPROVAL: THESE DRAWINGS, BEING FOR APPROVAL, ARE BY DEFINITION NOT FINAL, AND ARE FOR CONCEPTUAL REPRESENTATION ONLY. THEIR PURPOSE IS TO OBTAIN PROPER INTERPRETATION OF THE DESIGN INTENT FOR CONSTRUCTION. FOR CONSTRUCTION, THESE DRAWINGS CAN BE CONSIDERED AS COMPLETE.

FOR PERMIT: THESE DRAWINGS, BEING FOR PERMIT, ARE BY DEFINITION NOT FINAL. ONLY DRAWINGS ISSUED FOR CONSTRUCTION CAN BE CONSIDERED AS COMPLETE.

FOR CONSTRUCTION: FINAL DRAWINGS.



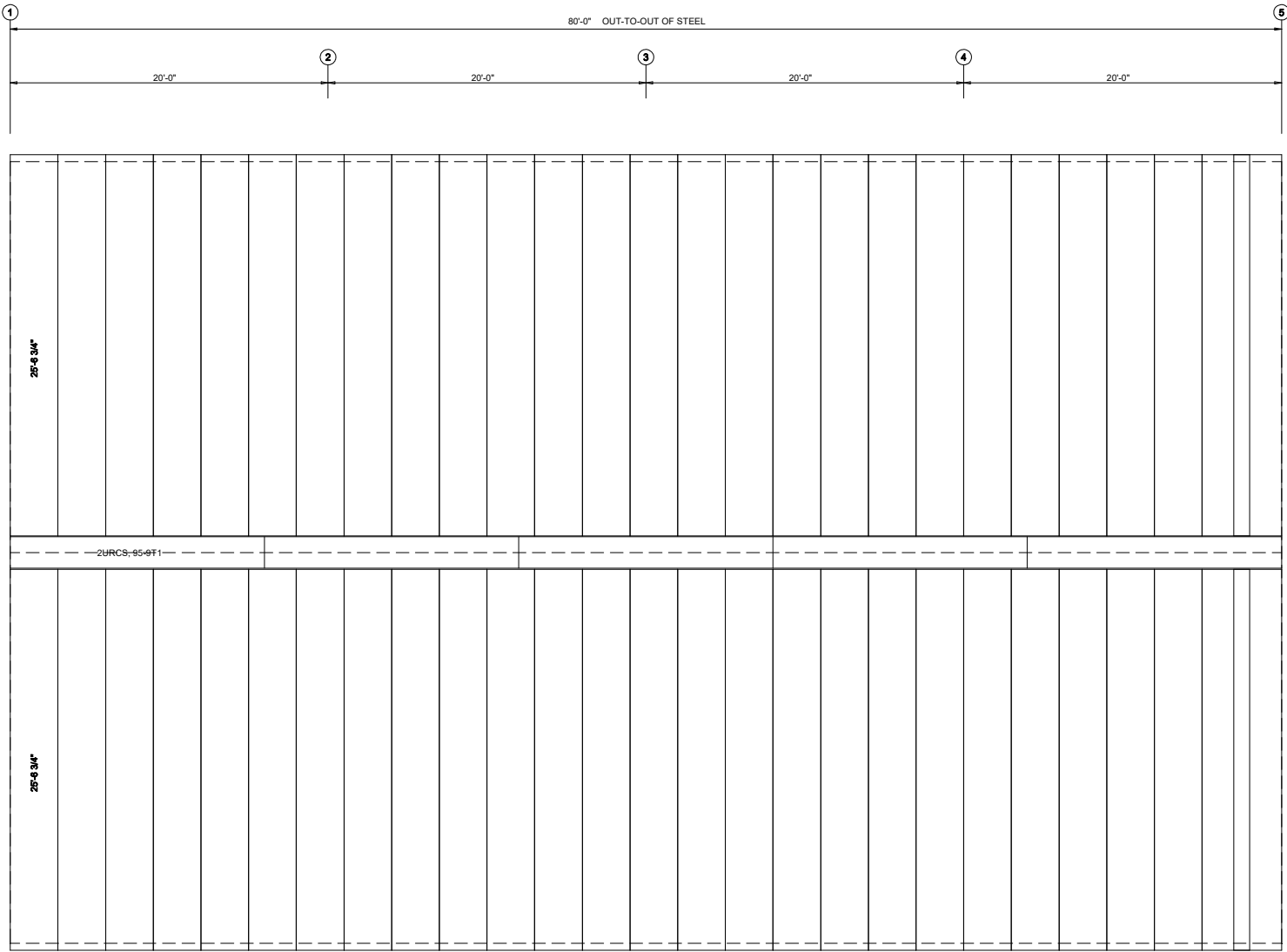
**GENERAL NOTES:**

- Screw Down Roof: Use TEK5WW screws in place of SD150 panel screws at all 10 gage purlins, eave struts, or roof joists.
- Standing Seam Roof: Use FST#6 in place of FST#1 clip to purlin screws at all 10 gage purlins, eave struts, or at roof joists.

**ROOF FRAMING PLAN**

DRAWING IS NOT TO SCALE

<b>F.O. 50x80x16</b>							
<p><b>DRAWING STATUS</b></p> <p>CITY: _____</p> <p>ST/ PK: _____</p>	<p><b>REVISION HISTORY</b></p> <table border="1" style="width: 100%; border-collapse: collapse;"> <thead> <tr> <th style="width: 80%;">REV.</th> <th style="width: 20%;">DATE</th> </tr> </thead> <tbody> <tr> <td> </td> <td> </td> </tr> <tr> <td> </td> <td> </td> </tr> </tbody> </table>	REV.	DATE				
REV.	DATE						
<p>FOR PERMIT: THESE DRAWINGS, BEING FOR PERMIT, ARE BY DEFINITION NOT FINAL. ONLY DRAWINGS ISSUED FOR CONSTRUCTION CAN BE CONSIDERED AS COMPLETE.</p> <p>FOR CONSTRUCTION: THESE DRAWINGS, BEING FOR CONSTRUCTION, ARE BY DEFINITION NOT FINAL. ONLY DRAWINGS ISSUED FOR CONSTRUCTION CAN BE CONSIDERED AS COMPLETE.</p>							
<p>50'-0" x 80'-0" x 16'-6"</p> <p>DATE: 5/26/26    REVISION: 0</p> <p>ENG: XXX    DWN: YY    APPD: XXX</p>							
<p>PAGE    OF</p>							



**GENERAL NOTES:**  
 Panel "Start" and "End" dimensions must be followed for the proper installation of the gable trim(s) provided.

**ROOF SHEETING PLAN**  
 PANELS: 26 Ga. R - TBD

DRAWING IS NOT TO SCALE

**F.O. 50x80x16**

REV.	DESCRIPTION	DATE

**DRAWING STATUS**

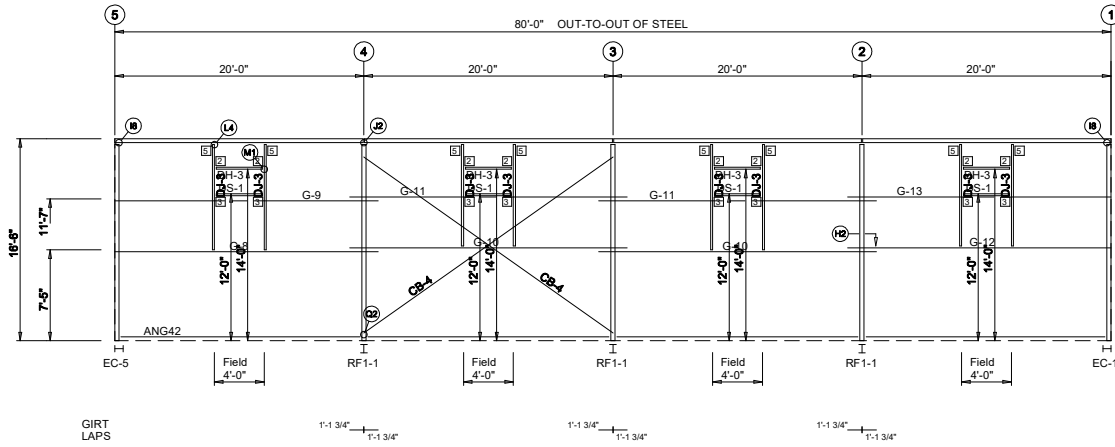
FOR APPROVAL: THESE DRAWINGS, BEING FOR APPROVAL, ARE BY DEFINITION NOT FINAL, AND ARE FOR CONCEPTUAL REPRESENTATION ONLY. THEIR PURPOSE IS TO CONFIRM PROPER INTERPRETATION OF THE PROJECT'S INTENT. CONSTRUCTION OF THIS PROJECT FOR CONSTRUCTION CAN BE CONSIDERED AS COMPLETE.

FOR PERMIT: THESE DRAWINGS, BEING FOR PERMIT, ARE BY DEFINITION NOT FINAL. ONLY DRAWINGS ISSUED FOR CONSTRUCTION CAN BE CONSIDERED AS COMPLETE.

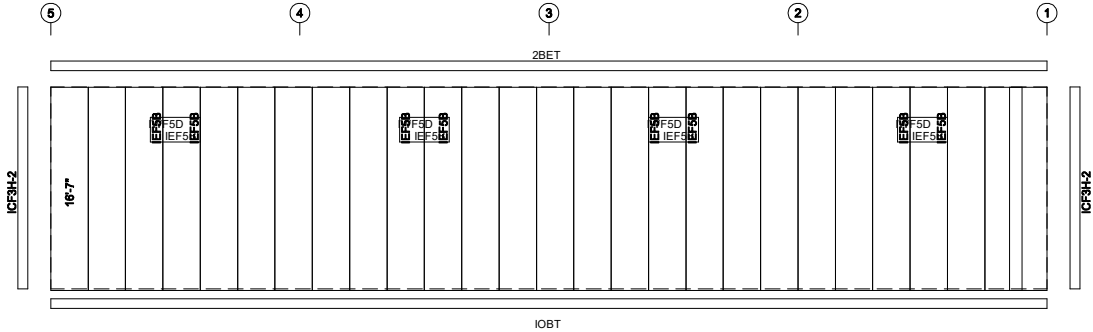
FOR CONSTRUCTION: FINAL DRAWINGS.

50'-0" x 80'-0" x 16'-6"  
 DATE: 5/26/26 REVISION: 0  
 ENG: XXX DWN: YY APPD: XXX

CONNECTION PLATES FRAME LINE D		
ID	QUAN	MARK/PART
2	8	c1
3	8	c2
5	8	JC



**SIDEWALL FRAMING: FRAME LINE D**



**SIDEWALL SHEETING & TRIM: FRAME LINE D**  
PANELS: 28 Ga. R - TBD

**GENERAL NOTES:**

1. Use TEK5WW screws in place of SD150 panel screws at all 10 gage members.
2. All connections to door or window jambs where the clip is not designated in the clip table / drawing are made with JC# clips (#= Girt Depth).

DRAWING IS NOT TO SCALE

TRIM COLORS	
EAVE TRIM = TBD	CORNER TRIM = TBD
BASE TRIM = TBD	GUTTER =
DOOR TRIM = TBD	DOWNSPOUTS =
RAKE TRIM = TBD	
* LINER TRIM = Liner panel color	
* SOFFIT TRIM = Soffit panel color	

\* ONLY APPLICABLE IF LINER TRIM OR SOFFIT PANEL IS INDICATED ON BUILDING ORDER.

F.O. 50x80x16	
50'-0" x 80'-0" x 16'-6"	REVISION: 0
DATE: 5/26/26	DWN: YY
ENG: XXX	APPD: XXX

REV.	DESCRIPTION	DATE
REVISION HISTORY		
CITY:		

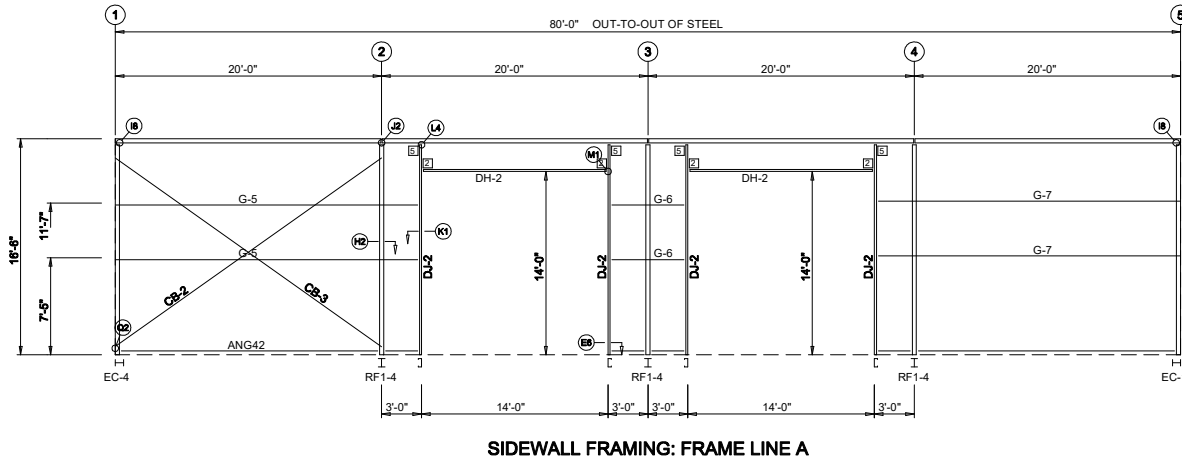
**DRAWING STATUS**

FOR PERMIT: THESE DRAWINGS, BEING FOR PERMIT, ARE BY DEFINITION NOT FINAL. ONLY DRAWINGS ISSUED FOR CONSTRUCTION CAN BE CONSIDERED AS COMPLETE.

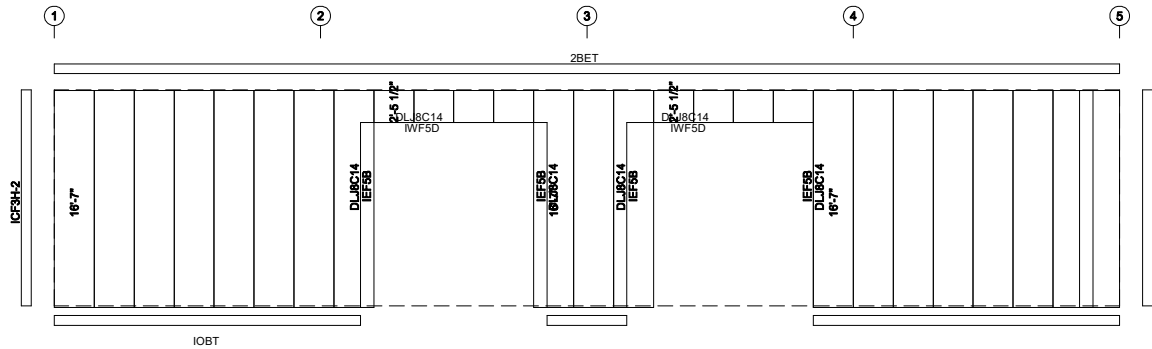
FOR CONSTRUCTION: THESE DRAWINGS, BEING FOR CONSTRUCTION, ARE BY DEFINITION NOT FINAL. ONLY DRAWINGS ISSUED FOR CONSTRUCTION CAN BE CONSIDERED AS COMPLETE.

FOR CONSTRUCTION: THESE DRAWINGS, BEING FOR CONSTRUCTION, ARE BY DEFINITION NOT FINAL. ONLY DRAWINGS ISSUED FOR CONSTRUCTION CAN BE CONSIDERED AS COMPLETE.

CONNECTION PLATES		
FRAME LINE A		
ID	QUAN	MARK/PART
2	4	c1
5	4	JC



**SIDEWALL FRAMING: FRAME LINE A**



**SIDEWALL SHEETING & TRIM: FRAME LINE A**

PANELS: 26 Ga. R - TBD

**GENERAL NOTES:**

1. Use TEK5WW screws in place of SD150 panel screws at all 10 gage members.
2. All connections to door or window jambs where the clip is not designated in the clip table / drawing are made with JC# clips. (#= Girt Depth).

DRAWING IS NOT TO SCALE

TRIM COLORS	
EAVE TRIM = TBD	CORNER TRIM = TBD
BASE TRIM = TBD	GUTTER =
DOOR TRIM = TBD	DOWNSPOUTS =
RAKE TRIM = TBD	
* LINER TRIM = Liner panel color	
* SOFFIT TRIM = Soffit panel color	
* ONLY APPLICABLE IF LINER TRIM OR SOFFIT PANEL IS INDICATED ON BUILDING ORDER.	

**F.O. 50x80x16**

REV.	DESCRIPTION	DATE
REVISION HISTORY		

**DRAWING STATUS**

- FOR PERMIT: THESE DRAWINGS, BEING FOR PERMIT, ARE BY DEFINITION NOT FINAL, AND ARE FOR CONCEPTUAL REPRESENTATION ONLY. THEIR PURPOSE IS TO CONFIRM PROPER INTERPRETATION OF THE PERMITTING AGENCY'S REQUIREMENTS. FOR CONSTRUCTION, THESE DRAWINGS CAN BE CONSIDERED AS COMPLETE.
- FOR CONSTRUCTION: THESE DRAWINGS, BEING FOR PERMIT, ARE BY DEFINITION NOT FINAL. ONLY DRAWINGS ISSUED FOR CONSTRUCTION CAN BE CONSIDERED AS COMPLETE.
- FOR CONSTRUCTION: FINAL DRAWINGS.

50'-0" x 80'-0" x 16'-6"  
 DATE: 5/26/26 REVISION: 0  
 ENG: XXX DWN: YYY APPD: XXX